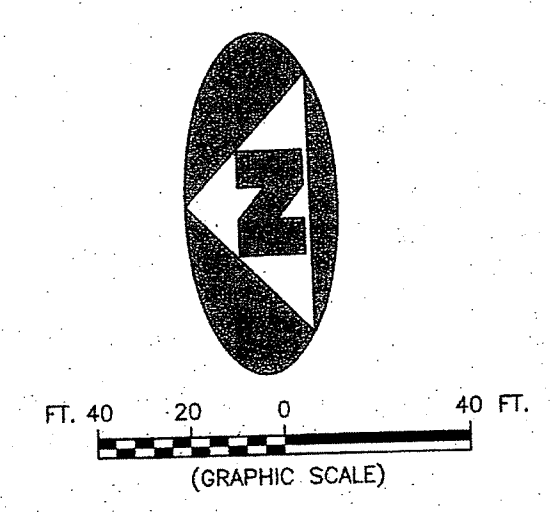
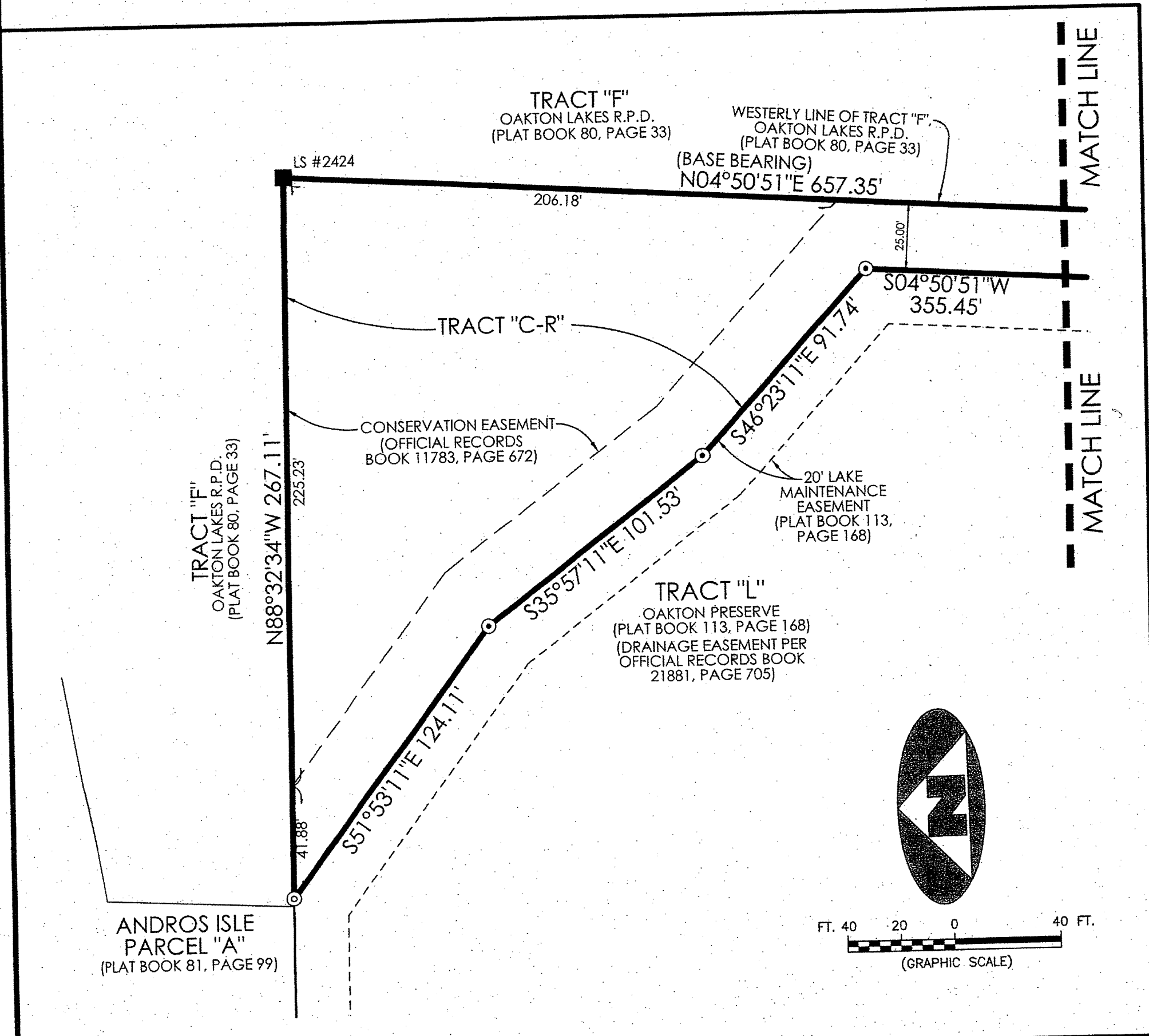
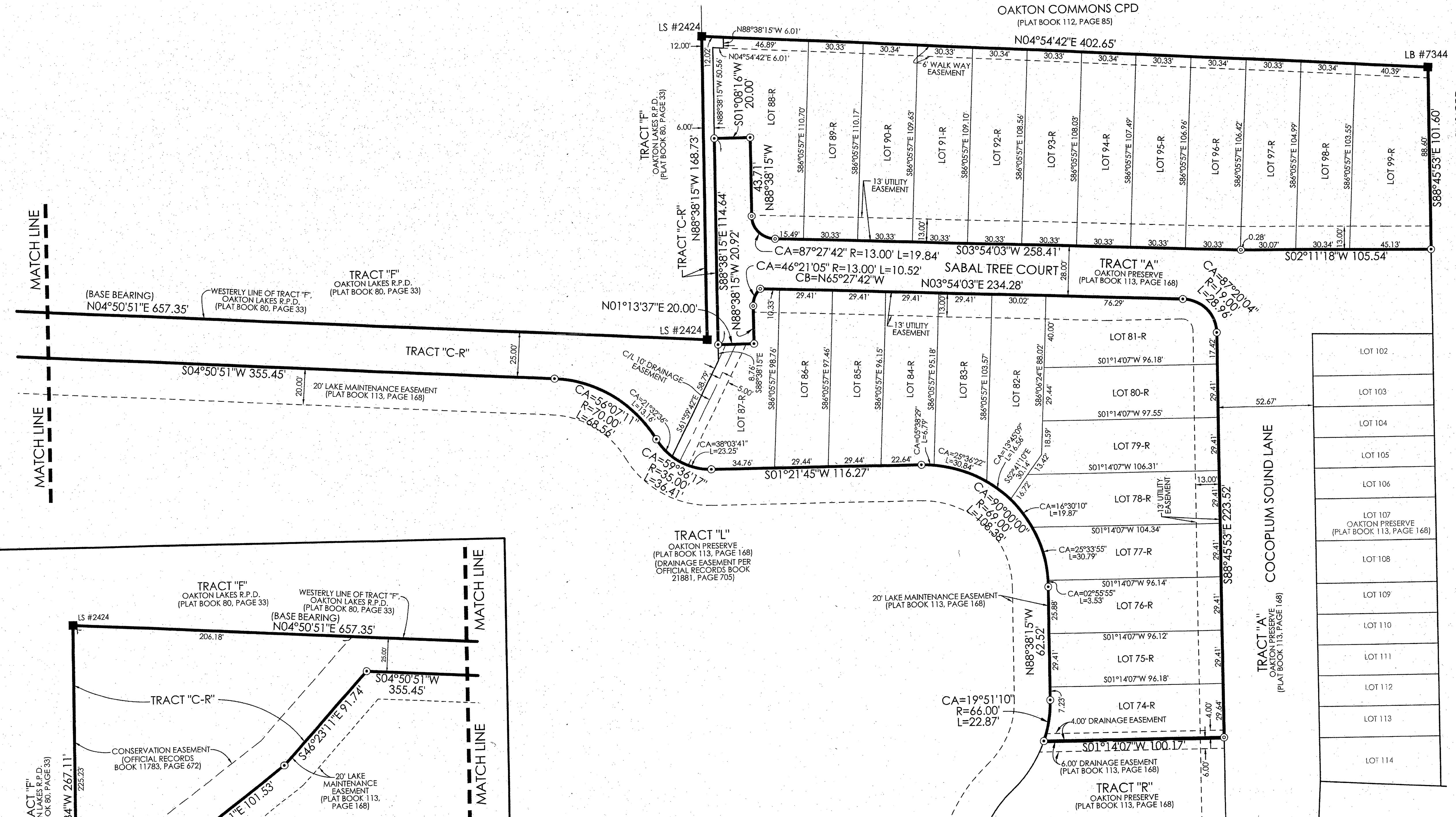
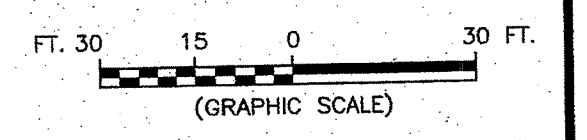
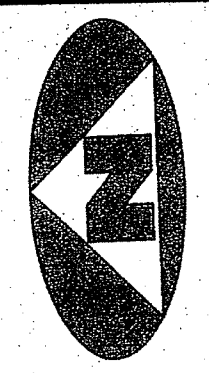


FEBRUARY 2013

# OAKTON PRESERVE REPLAT

BEING A REPLAT OF LOTS 13 THROUGH 34, INCLUSIVE, LOTS 74 THROUGH 101, INCLUSIVE, TRACT "C", AND A PORTION OF TRACT "A", OAKTON PRESERVE, RECORDED IN PLAT BOOK 113, PAGE 168, PUBLIC RECORDS, PALM BEACH COUNTY, FLORIDA AND LYING IN THE SOUTHEAST QUARTER OF SECTION 20, TOWNSHIP 43 SOUTH, RANGE 42 EAST, CITY OF WEST PALM BEACH, PALM BEACH COUNTY, FLORIDA



**LEGEND**

(R)	DENOTES A RADIAL LINE	R	DENOTES RADIUS DISTANCE
C/L	DENOTES A CENTERLINE	L	DENOTES ARC LENGTH DISTANCE
ORB	DENOTES OFFICIAL RECORDS BOOK	CA	DENOTES CENTRAL ANGLE
		CB	DENOTES CHORD BEARING
⊙	DENOTES A SET PERMANENT REFERENCE MONUMENT	■	DENOTES A FOUND PERMANENT REFERENCE MONUMENT
⊙	IRON ROD AND CAP STAMPED LB 7344	■	4"x4" CONCRETE MONUMENT WITH DISK STAMPED AS SHOWN
⊙	NAIL AND DISK STAMPED LB 7344 SET IN CONCRETE		

**SURVEYOR'S NOTES**

1. THE BEARING BASIS (BASE BEARING), AS SHOWN HEREON, IS BASED ON THE PLATTED BEARING OF NORTH 04°50'51" EAST, ALONG THE WESTERLY LINE OF TRACT "F", OAKTON LAKES R.P.D., PLAT BOOK 80, PAGE 33, AS SHOWN HEREON, AND ALL OTHER BEARINGS ARE RELATIVE THERETO
2. IN THOSE INSTANCES WHERE UTILITY OR DRAINAGE STRUCTURES ARE CONSTRUCTED IN CONFLICT WITH THE PLATTED PERMANENT CONTROL POINT POSITION STRADDLERS MONUMENTED AS PERMANENT CONTROL POINTS WILL BE SET TO REFERENCE THE PLATTED POSITION.
3. LINES THAT INTERSECT CURVES ARE RADIAL, UNLESS OTHERWISE NOTED.
4. THIS INSTRUMENT WAS PREPARED BY STEPHEN L. SHIRLEY, PROFESSIONAL SURVEYOR AND MAPPER NO. 3918, IN AND FOR THE OFFICES OF ASSOCIATED LAND SURVEYORS, INC., 4152 WEST BLUE HERON BOULEVARD, SUITE 121, RIVIERA BEACH, FLORIDA, 33404

**ASSOCIATED LAND SURVEYORS, INC.**  
 4152 W. BLUE HERON BOULEVARD-SUITE 121  
 RIVIERA BEACH FLORIDA 33404 LB 7344  
 PHONE: (561) 848-2102 FAX: (561) 844-9659 EMAIL: als@allsurvey.net

SCALE: 1"=30'  
 DWN: BLS  
 WO.NO.: P226  
 SHEET 3 OF 3

